

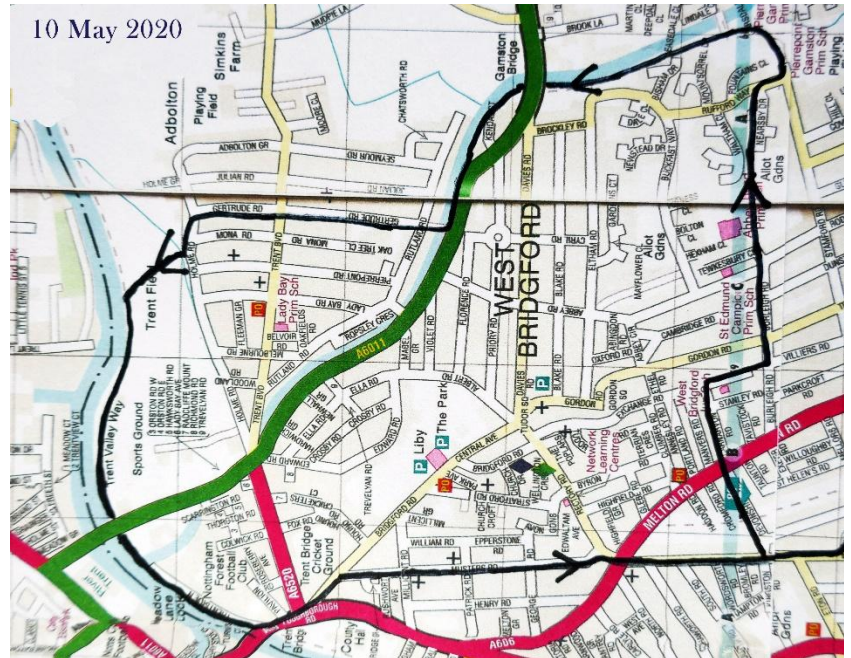
## Walk No2.

To Lady Bay by canal and river – but not by boat!

10<sup>th</sup> May 2020

As the title suggests, this walk is canal-side and riverside but with some inevitable suburbia – and any countryside is just a fleeting view.

A walk of about 9km with no hills.



It will be no surprise that 'lockdown' was a constant element on the walk!



From Musters Road turn along Devonshire Road and then cross to Carnarvon Road over a deserted Melton Road....

....because, of course, the cars are all parked up and not going anywhere



At the end of Carnarvon Road, turn right on Exchange Road and through the 'jitty' and go left on Burleigh Road.

We see, as the walk continues, nowhere is busy .....



....the pubs (The Willow Tree) are closed, access denied.

We pass empty tennis courts....



...and deserted rowing clubs – no boats on the river.



On a more positive note, it is great to see so many windows with rainbow paintings



A number of houses had Union Jacks, bunting and balloons, etc, for VE Day – I just include a couple that caught my eye.....



This one perhaps reflects the recent situation – Little Britain, once proud and robust, now rather deflated, seen better times and now gated to the outside world.

More positively, I liked this tiny one (a couple of centimetres)



But, back to the walk directions....

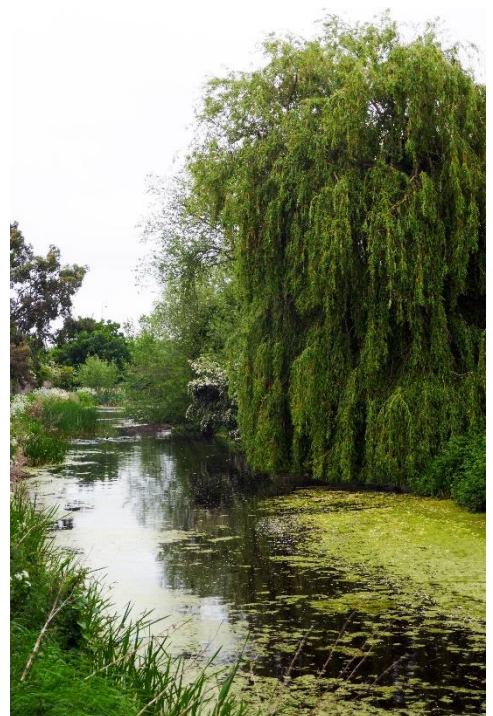
From the end of Burleigh Road continue past Abbey Road and St Edmund Campion Schools along the path (with a couple of passing places for the ‘social distancing’) between allotments and, passing some gnomes, onto Nearsby Drive to Rufford Way and go right and then left passing the end of the (empty) pub car park.



At the end, go ahead over a small bridge and turn left to join the canal path, which was really the main point of the route.

There are lots of nice wild plants

and room to pass other walkers



And, most important of all, the wildlife....

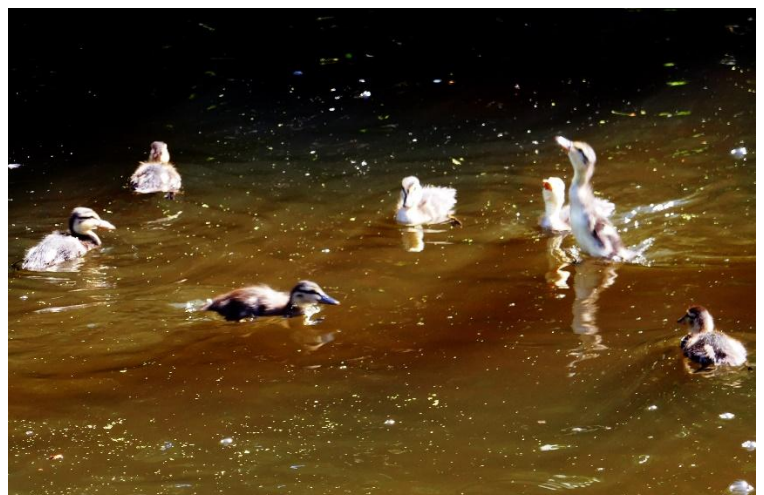
Lots of Coot chicks, with their red faces, surrounded by yellow feathers



They soon lose this colour and become more like their parents but without the distinct white beak



There were also ducklings and various ducks



but no cygnets, just a  
solitary swan



And.....

...a Heron!

I have only seen a heron  
here on a few  
occasions, so great to  
see one today.

Although I got quite  
close (canal width), the  
heron was content to  
look around,  
disdainfully ignoring my  
presence.

Continue under one  
carriageway of Radcliffe  
Road and then cross  
over the other  
carriageway and re-join  
the canal path.



One final canal-side picture



And, where there is a partial barrier over the path, turn right leaving the canal and go into Lady Bay...

Lady Bay is a bit different from much of West Bridgford, with interesting buildings....  
...some with surprising extensions



The best time to visit Lady Bay is for the Open Gardens (late June/early July).....but not this year, sadly. Let's hope for 2021

Continue along Gertrude Road, across Trent Boulevard, and turn left at Holme Road.

...passing a positive poster on your left, and go ahead along Gertrude Road.



Go along Holme Road  
(way back in the 1970s I  
had a tiny flat here for a  
short time ....it had an  
outside toilet!) and,  
shortly after passing  
Mona Road, turn right  
through the barrier....



...and out onto The Hook –  
There is plenty of open space for  
walking between here and  
Holme Pierrepont,  
but not today

Go across The Hook  
diagonally bearing left  
to the Trent-side path,  
with views over the  
river to Rufford Hall  
(National Design  
Academy)



And the changing  
scene along the  
Nottingham  
Trentside





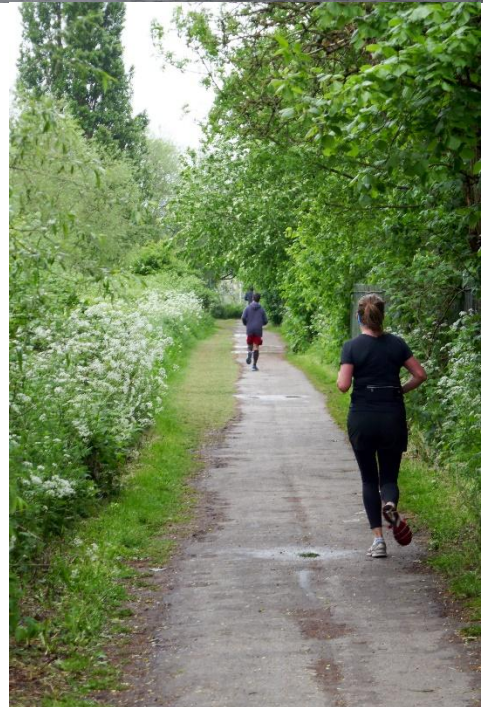
Trent Basin and the site of the old sailing club

And Trent Bridge Quays



Follow the riverside path (part of Trent Valley Way)

avoiding the many joggers



## Go under Lady Bay Bridge

Originally, this was the rail crossing for the Midland Railway to Melton Mowbray. When the line was abandoned in 1968, plans were made to convert the river crossing and so relieve pressure on Trent Bridge. However, these works were not complete until 1979.

Does anyone remember when the bridge was closed in Dec 1981 for filming as an Eastern Bloc rail crossing in the 1982 TV series Smiley's People based on the novel by John le Carre.



And finally....

At Trent Bridge turn left, over Radcliffe Road, left into Bridgford Road past Trent Bridge cricket ground and turn right up the quiet Musters Road to end this walk

